

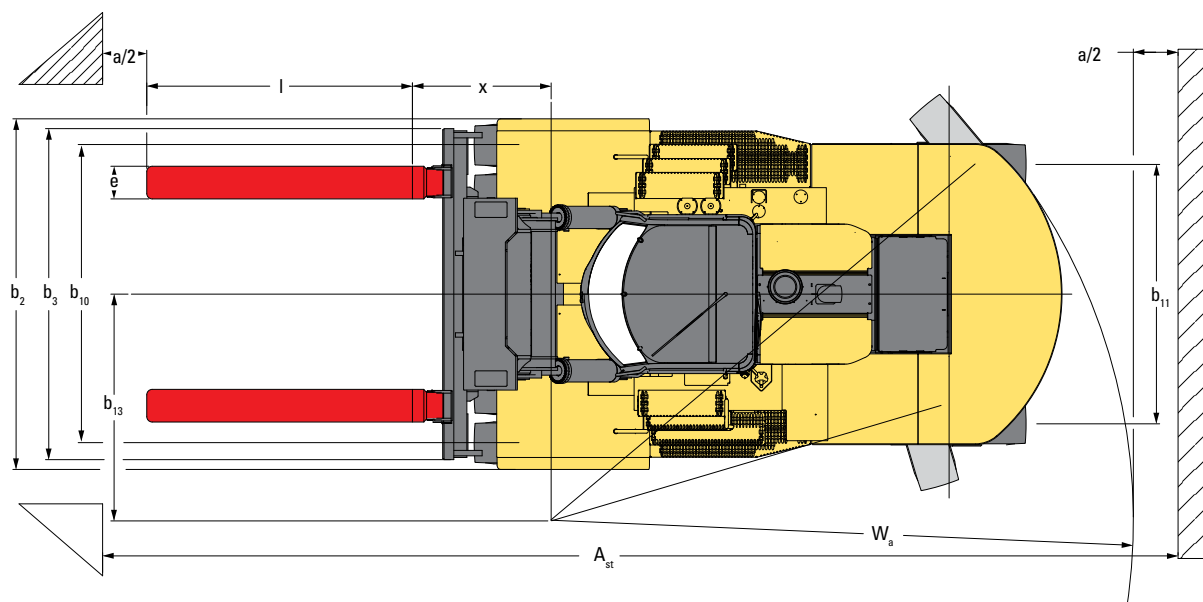
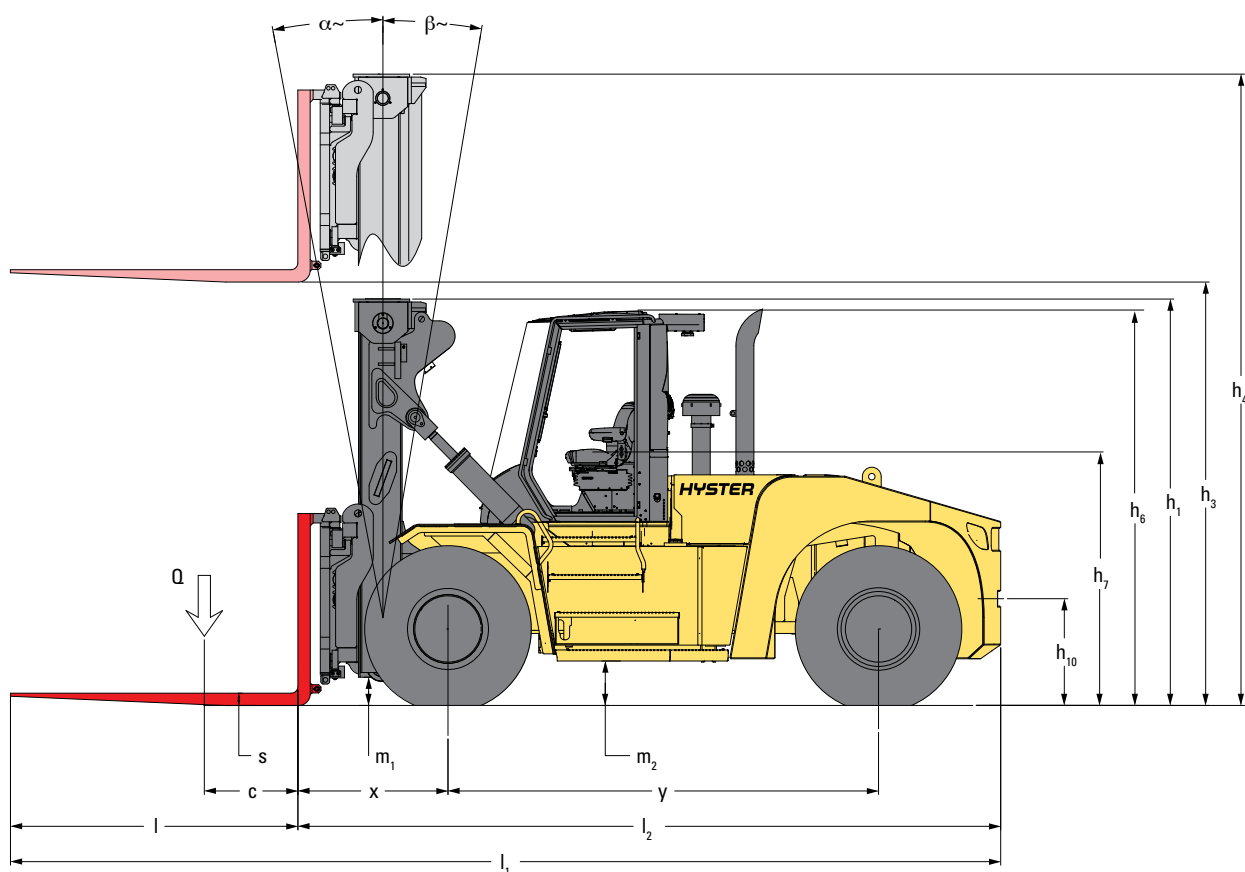


**STRONG PARTNERS.  
TOUGH TRUCKS.™**

## **H25-32XD SERIES TECHNICAL GUIDE**

**[WWW.HYSTER.COM](http://WWW.HYSTER.COM)**

## > DIMENSIONS



● = Centre of gravity of unladen truck

$$A_{ST} = W_a + x + l_6 + a \text{ (if } b_{12}/2 < b_{13})$$

$$A_{ST} = W_a + ((l_6+x)^2 + (b_{12}/2-b_{13})^{0.5} + a \text{ (if } b_{12}/2 > b_{13} \text{ and } W_a > b_{13} \cdot b_{12}/2)$$

$$A_{ST} = b_{13} + b_{12}/2 ((l_6+x)^2 + (b_{12}/2-b_{13})^{0.5} + a \text{ (if } b_{12}/2 > b_{13} \text{ and } W_a < b_{13} \cdot b_{12}/2)$$

$a$  = Minimum operating clearance = 10% of  $A_{ST}$   
(VDI standard = 200 mm BITA recommendation = 300 mm)

$l_6$  = load lengths

$b_{12}$  = load width

GENERAL	1-1	Manufacturer			HYSTER	HYSTER
	1-2	Model designation			H25XDS9; H25XD12	H28-32XD(S)12
	1-3	Powertrain / drivetrain			Diesel	Diesel

ENGINE	7-1	Engine manufacturer / model			Mercedes / OM936	Mercedes / OM936
	7-1A	EPA / CE compliance			Stage V	Stage V
	7-2	Engine power output according to ISO 1585		kW	180	180
	7-2-1	Engine power output - Peak		kW	180	180
	7-3	Rated speed		min <sup>-1</sup>	1,800	1,800
	7-3-1	Engine torque @rpm (1/min)		Nm/min <sup>-1</sup>	1,000 @ 1200-1600	1,000 @ 1200-1600
	7-4	Number of cylinders / displacement		# / cm3	6 / 6,690	6 / 6,690
	7-8	Alternator output		Amps	150	150
	7-9	Electrical system voltage		V	24	24
	7-10	Battery voltage, rated capacity		V / Ah	24 / 102	24 / 102

DRIVE	8-1	Drive control / Transmission		Type / #	Torque Converter	Torque Converter
	8-2	Transmission manufacturer / type		Type / #	ZF - 5WG211	ZF - 5WG211
	8-4	Transmission speeds forward / backward		#	5 / 3	5 / 3
	8-5	Coupling		Type	Torque Converter	Torque Converter
	8-6	Wheel drive / drive axle manufacturer / type		Type / #	Axle Tech PRLC1794W4H	Axle Tech PRC3806W4H
	8-11	Service brake		Type	Oil immersed disc	Oil immersed disc
	8-12	Parking brake		Type	Dry disc on drive axle	Dry disc on drive axle

MISC	10-1	Operating pressure for attachments		bar	225	
	10-2	Oil volume for attachments		l/m	100	
	10-3	Hydraulic tank capacity		l	237	
	10-4	Fuel tank capacity		l	304	
	10-4-1	DEF/AdBlue Tank capacity		l	38	
	10-5	Steering design			Hydraulic power steering	
	10-8	Towing coupling, model / type			Yes / Pin	

## NOTES:


Specifications are affected by the condition of the vehicle and how it is equipped, as well as the nature and condition of the operating area. Inform your dealer of the nature and condition of the intended operating area when purchasing your Hyster® truck.

- (1) Unladen with new tyres
  - (2) Bottom of forks
  - (3) Full suspension seat in depressed position
  - (4) Length without carriage
  - (5) Forks in alternative position
  - (6) Distance centre truck to centre of internal turning radius
  - (7) Gradeability figures are provided for comparison of tractive performance, but are not intended to endorse the operation of vehicle on the stated inclines.
- Follow instructions in the operating manual regarding operation on inclines.

All capacities are according to EN1551.

## MAST TABLE:

#) Note: Carriage with ZERO IN-TO-IN forklifting not recommended in combination with liftheights above 6200 mm

 Safety: This truck conforms to the current EU and ANSI requirements.

## NOTICE:

Care must be exercised when handling elevated loads. Operators must be trained and must read, understand and follow the instructions contained in the Operating Manual.

All values are nominal values and they are subject to tolerances. For further information, please contact the manufacturer.

Hyster products are subject to change without notice.

Lift trucks illustrated may feature optional equipment. Values may vary with alternative configurations.

*CERTIFICATION: Hyster lift trucks meet the design and construction requirements of B56.1-1969, per OSHA Section 1910.178(a)(2), and also comply with the B56.1 revision in effect at time of manufacture. Certification of compliance with the applicable ANSI standards appears on the lift truck. Performance specifications are for a truck equipped as described under Standard Equipment on this Technical Guide. Performance specifications are affected by the condition of the vehicle and how it is equipped, as well as by the nature, condition of the operating area, proper service and maintenance of the vehicle. If these specifications are critical, the proposed application should be discussed with your dealer.*

*NOTE: Specifications, unless otherwise listed, are for a standard truck without optional equipment.*

Specification data is based on VDI 2198.

# > H25XDS9 / H25XD12 / H28XD12 SPECIFICATIONS

GENERAL	1-1	Manufacturer			HYSTER		HYSTER		HYSTER	
	1-2	Model designation			H25XDS9		H25XD12		H28XD12	
	1-3	Powertrain / drivetrain			Diesel		Diesel		Diesel	
	1-4	Operator type			Seated		Seated		Seated	
	1-5	Load capacity at load center, nominal	Q	kg	25,000		25,000		28,000	
	1-6	Load center distance	c	mm	900		1,200		1,200	
	1-8	Load distance	x	mm	1,189		1,189		1,274	
	1-9	Wheelbase	y	mm	3,655		4,315		4,315	
WT.	2-1	Service weight		kg	37,051		37,473		44,688	
	2-2	Axle loading with load, front / rear		kg	57,869	4,182	57,511	4,962	66,910	5,778
	2-3	Axle loading without load, front / rear		kg	18,580	18,471	18,670	18,804	22,857	21,832
WHEELS	3-1	Tyre type			Pneumatic		Pneumatic		Pneumatic	
	3-2	Tyre size, front			14.00 - 24 28PR		14.00 - 24 28PR		16.00 - 25 32PR	
	3-3	Tyre size, rear			14.00 - 24 28PR		14.00 - 24 28PR		16.00 - 25 32PR	
	3-5	Wheels, number front / rear (x = driven wheels)			x 4 / 2		x 4 / 2		x 4 / 2	
	3-6	Tread, front	b <sub>10</sub>	mm	2,279		2,279		2,424	
	3-7	Tread, rear	b <sub>11</sub>	mm	2,381		2,381		2,338	
	3-7	Tread, rear								
DIMENSIONS	4-1	Mast tilt, forward / backward	α/β	deg	6° / 10°		6° / 10°		6° / 10°	
	4-2	Height, mast lowered (1)	h <sub>1</sub>	mm	4,099		4,099		4,224	
	4-3	Free lift	h <sub>2</sub>	mm	0		0		0	
	4-4	Lift (2)	h <sub>3</sub>	mm	4,265		4,265		4,265	
	4-5	Height, mast extended	h <sub>4</sub>	mm	6,231		6,231		6,356	
	4-7	Cab height (open cab)	h <sub>6</sub>	mm	3,370		3,370		3,466	
	4-7-1	Height of overhead guard (closed cab)	h <sub>6</sub>	mm	3,406		3,406		3,502	
	4-7-2	Height of overhead guard (closed cab w/ airco)	h <sub>6</sub>	mm	3,439		3,439		3,535	
	4-7-3	Height of overhead guard (closed cab w/ strobe light)	h <sub>6</sub>	mm	3,538		3,538		3,634	
	4-7-4	Height of overhead guard (closed cab w/ work lights)	h <sub>6</sub>	mm	3,597		3,597		3,693	
	4-7-5	Height of overhead guard (closed cab w/ airco & strobe light)	h <sub>6</sub>	mm	3,612		3,612		3,708	
	4-8	Seat height to SIP (3)	h <sub>7</sub>	mm	2,237		2,237		2,333	
	4-12	Coupling height	h <sub>10</sub>	mm	935		935		1,031	
	4-16	Overhang	l <sub>5</sub>	mm	8,321		8,321		9,066	
	4-19	Overall length	l <sub>1</sub>	mm	5,881		5,881		6,626	
	4-20	Length to face of forks (4)	l <sub>2</sub>	mm	3,220		3,220		3,430	
	4-21	Overall width	b <sub>2</sub>	mm	2,542		2,542		2,542	
	4-22	Fork dimensions ISO 2331	s/e/l	mm	105 / 280 / 2,440		105 / 280 / 2,440		105 / 300 / 2,440	
	4-23	Fork carriage type			Dual Function - Sideshift Fork Positioning Hook type		Dual Function - Sideshift Fork Positioning Hook type		Dual Function - Sideshift Fork Positioning Hook type	
	4-24	Fork carriage width	b <sub>3</sub>	mm	3,040		3,040		3,200	
	4-25	Distance over fork arms, minimum / maximum	b <sub>5</sub>	mm	1,430	2,970	1,430	2,970	1,480	3,140
	4-25-1	Distance over fork arms, minimum / maximum (5)	b <sub>5</sub>	mm	880	2,420	880	2,420	930	2,590
	4-30	Sideshift @ width over forks	b <sub>8</sub>	mm	+/-385	2,200	+/-385	2,200	+/-415	2,310
	4-31	Ground clearance, laden, below mast	m <sub>1</sub>	mm	219		219		227	
	4-32	Ground clearance, centre of wheelbase	m <sub>2</sub>	mm	406		406		502	
	4-33	Load dimension b <sub>12</sub> × l <sub>6</sub> crossways		mm	2,400	2,400	2,400	2,400	2,400	2,400
	4-34-1-2	Aisle width, without operating clearance	Ast	mm	8,915		9,774		9,859	
	4-34-1-2	Aisle width, with 200 mm operating clearance	Ast	mm	9,115		9,974		10,059	
	4-34-1-3	Aisle width, with 10% operating clearance	Ast	mm	9,807		10,751		10,845	
	4-35	Outside turning radius	W <sub>a</sub>	mm	5,326		6,185		6,185	
	4-36	Internal turning radius (6)	b <sub>13</sub>	mm	2,040		2,589		2,589	
PERFORMANCE	5-1	Travel speed, with / without load		km/h	25	25	25	25	25	25
	5-2	Lifting speed, with / without load backwards		m/s	0.33	0.35	0.33	0.35	0.27	0.29
	5-2-1	Lifting speed, with 70% load		m/s	0.34		0.34		0.28	
	5-3	Lowering speed with / without load		m/s	0.50	0.50	0.50	0.50	0.50	0.50
	5-5	Drawbar pull - 1.6 km/h   1 mph, with / without load		kN	197	201	197	201	198	203
	5-5-1	Drawbar pull - stall, with / without load		kN	239	243	239	243	241	245
	5-7	Gradeability - 1.6 km/h   1 mph, with / without load (7)		%	34	34	34	35	29	35
	5-7-1	Gradeability - stall, with / without load (7)		%	43	34	42	35	36	35
	5-9	Acceleration time, with / without load		sec	On request		On request		On request	

(1) Unladen with new tyres

(2) Bottom of forks

(3) Full suspension seat in depressed position

(4) Length without carriage

(5) Forks in alternative position

(6) Distance centre truck to centre of internal turning radius

(7) Gradeability figures are provided for comparison of tractive performance, but are not intended to endorse the operation of vehicle on the listed inclines.

Follow instructions in the operating manual regarding operation on inclines.

# H30XD9 / H30XD12 / H32XD9 / H32XD12 SPECIFICATIONS



GENERAL	1-1	Manufacturer			HYSTER		HYSTER		HYSTER		HYSTER	
	1-2	Model designation			H30XM9		H30XM12		H32XM9		H32XM12	
	1-3	Powertrain / drivetrain			Diesel		Diesel		Diesel		Diesel	
	1-4	Operator type			Seated		Seated		Seated		Seated	
	1-5	Load capacity at load center, nominal	Q	kg	29,700		30,000		31,950		32,000	
	1-6	Load center distance	c	mm	900		1,200		900		1,200	
	1-8	Load distance	x	mm	1,274		1,274		1,274		1,274	
	1-9	Wheelbase	y	mm	3,935		4,315		3,935		4,825	
WT.	2-1	Service weight		kg	44,439		45,383		45,049		44,919	
	2-2	Axle loading with load, front / rear		kg	68,971	5,168	70,133	5,251	72,512	4,487	71,254	5,665
	2-3	Axle loading without load, front / rear		kg	22,862	21,577	22,932	22,451	22,910	22,139	22,847	22,073
WHEELS	3-1	Tyre type			Pneumatic		Pneumatic		Pneumatic		Pneumatic	
	3-2	Tyre size, front			16.00 - 25 32PR		16.00 - 25 32PR		16.00 - 25 32PR		16.00 - 25 32PR	
	3-3	Tyre size, rear			16.00 - 25 32PR		16.00 - 25 32PR		16.00 - 25 32PR		16.00 - 25 32PR	
	3-5	Wheels, number front / rear (x = driven wheels)			x 4 / 2		x 4 / 2		x 4 / 2		x 4 / 2	
	3-6	Tread, front	b <sub>10</sub>	mm	2,424		2,424		2,424		2,424	
	3-7	Tread, rear	b <sub>11</sub>	mm	2,338		2,338		2,338		2,338	
	4-1	Mast tilt, forward / backward	α/β	deg	6° / 10°		6° / 10°		6° / 10°		6° / 10°	
DIMENSIONS	4-2	Height, mast lowered (1)	h <sub>1</sub>	mm	4,224		4,224		4,224		4,224	
	4-3	Free lift	h <sub>2</sub>	mm	0		0		0		0	
	4-4	Lift (2)	h <sub>3</sub>	mm	4,265		4,265		4,265		4,265	
	4-5	Height, mast extended	h <sub>4</sub>	mm	6,356		6,356		6,356		6,356	
	4-7	Cab height (open cab)	h <sub>6</sub>	mm	3,466		3,466		3,466		3,466	
	4-7-1	Height of overhead guard (closed cab)	h <sub>6</sub>	mm	3,502		3,502		3,502		3,502	
	4-7-2	Height of overhead guard (closed cab w/ airco)	h <sub>6</sub>	mm	3,535		3,535		3,535		3,535	
	4-7-3	Height of overhead guard (closed cab w/ strobe light)	h <sub>6</sub>	mm	3,634		3,634		3,634		3,634	
	4-7-4	Height of overhead guard (closed cab w/ work lights)	h <sub>6</sub>	mm	3,693		3,693		3,693		3,693	
	4-7-5	Height of overhead guard (closed cab w/ airco & strobe light)	h <sub>6</sub>	mm	3,708		3,708		3,708		3,708	
	4-8	Seat height to SIP (3)	h <sub>7</sub>	mm	2,333		2,333		2,333		2,333	
	4-12	Coupling height	h <sub>10</sub>	mm	1,031		1,031		1,031		1,031	
	4-16	Overhang	l <sub>5</sub>	mm	8,686		9,066		8,686		9,576	
	4-19	Overall length	l <sub>1</sub>	mm	6,246		6,626		6,246		7,136	
	4-20	Length to face of forks (4)	l <sub>2</sub>	mm	3,430		3,430		3,430		3,430	
	4-21	Overall width	b <sub>2</sub>	mm	2,542		2,542		2,542		2,542	
	4-22	Fork dimensions ISO 2331	s/e/l	mm	105 / 300 / 2,440		105 / 300 / 2,440		105 / 300 / 2,440		105 / 300 / 2,440	
	4-23	Fork carriage type			Dual Function - Sideshift Fork Positioning Hook type		Dual Function - Sideshift Fork Positioning Hook type		Dual Function - Sideshift Fork Positioning Hook type		Dual Function - Sideshift Fork Positioning Hook type	
	4-24	Fork carriage width	b <sub>3</sub>	mm	3,200		3,200		3,200		3,200	
	4-25	Distance over fork arms, minimum / maximum	b <sub>5</sub>	mm	1,480	3,140	1,480	3,140	1,480	3,140	1,480	3,140
	4-25-1	Distance over fork arms, minimum / maximum (5)	b <sub>5</sub>	mm	930	2,590	930	2,590	930	2,590	930	2,590
	4-30	Sideshift @ width over forks	b <sub>8</sub>	mm	+/-415	2,310	+/-415	2,310	+/-415	2,310	+/-415	2,310
	4-31	Ground clearance, laden, below mast	m <sub>1</sub>	mm	227		227		227		227	
	4-32	Ground clearance, centre of wheelbase	m <sub>2</sub>	mm	502		502		502		502	
	4-33	Load dimension b <sub>12</sub> × l <sub>6</sub> crossways		mm	2,400	2,400	2,400	2,400	2,400	2,400	2,400	2,400
	4-34-1-2	Aisle width, without operating clearance	Ast	mm	9,365		9,859		9,365		10,522	
	4-34-1-2	Aisle width, with 200 mm operating clearance	Ast	mm	9,565		10,059		9,565		10,722	
	4-34-1-3	Aisle width, with 10% operating clearance	Ast	mm	10,302		10,845		10,302		11,574	
	4-35	Outside turning radius	W <sub>a</sub>	mm	5,691		6,185		5,691		6,848	
	4-36	Internal turning radius (6)	b <sub>13</sub>	mm	2,273		2,589		2,273		3,013	
PERFORMANCE	5-1	Travel speed, with / without load		km/h	25	25	25	25	25	25	25	25
	5-2	Lifting speed, with / without load backwards		m/s	0.27	0.29	0.27	0.29	0.27	0.29	0.27	0.29
	5-2-1	Lifting speed, with 70% load		m/s	0.28		0.28		0.28		0.28	
	5-3	Lowering speed with / without load		m/s	0.50	0.50	0.50	0.50	0.50	0.50	0.50	0.50
	5-5	Drawbar pull - 1.6 km/h   1 mph, with / without load		kN	198	203	198	203	197	203	197	203
	5-5-1	Drawbar pull - stall, with / without load		kN	240	245	240	245	240	245	240	245
	5-7	Gradeability - 1.6 km/h   1 mph, with / without load (7)		%	28	35	28	35	27	34	27	36
	5-7-1	Gradeability - stall, with / without load (7)		%	35	35	34	35	33	34	34	36
	5-9	Acceleration time, with / without load		sec	On request		On request		On request		On request	

(1) Unladen with new tyres

(2) Bottom of forks

(3) Full suspension seat in depressed position

(4) Length without carriage

(5) Forks in alternative position

(6) Distance centre truck to centre of internal turning radius

(7) Gradeability figures are provided for comparison of tractive performance, but are not intended to endorse the operation of vehicle on the stated inclines.

Follow instructions in the operating manual regarding operation on inclines.

## > MAST AND CAPACITY INFORMATION

	Lift height h <sub>3</sub> (mm)	Lowered height h <sub>1</sub> (mm)	Free lift height h <sub>2</sub> (m)	Extended height h <sub>4</sub> (mm)	Integrated coil ram mm side shift with +/-250		Pin type side shift carriage mounted coil ram	
					Capacity @ 1.200 mm load centre (kg)	Mast tilt (forward/ backward) (°)	Capacity @ 1.200 mm load centre	Mast tilt (forward/ backward)
H25XDS9	2,745	5,169	2,745	5,169	30,000	6 / 10	16,000	16,000
H25XD12	2,745	5,169	2,745	5,169	30,000	6 / 10	16,000	16,000
H28XD12	2,745	5,265	2,745	5,265	36,000	6 / 10	16,000	16,000
H30XDS9	2,745	5,265	2,745	5,265	36,000	6 / 10	16,000	16,000
H30XD12	2,745	5,265	2,745	5,265	36,000	6 / 10	16,000	16,000
H32XDS9	2,745	5,265	2,745	5,265	36,000	6 / 10	16,000	16,000
H32XD12	2,745	5,265	2,745	5,265	36,000	6 / 10	15,700	15,700

### H25XDS9 RATED CAPACITY KG @ 900 MM AND @1200 LOAD CENTRE

	Lift height h <sub>3</sub> (mm)	Lowered height h <sub>1</sub> (mm)	Free lift height h <sub>2</sub> (m)	Extended height h <sub>4</sub> (mm)	Dual Function Side Shift & Fork Positioning carriage without ZERO IN-TO-IN forklifting			Dual Function Side Shift & Fork Positioning carriage with ZERO IN-TO-IN forklifting		
					Capacity @ 900 mm load centre (kg)	Mast tilt (forward/ backward) (°)	Capacity @ 1.200 mm load centre (kg)	Capacity @ 900 mm load centre (kg)	Mast tilt (forward/ backward) (°)	Capacity @ 1.200 mm load centre (kg)
2 STAGE NFL	3,155	3,491	0	5,016	25,000	6 / 10	22,700	25,000	6 / 10	22,700
	3,760	3,794	0	5,621	25,000	6 / 10	22,640	25,000	6 / 10	22,640
	4,370	4,099	0	6,231	25,000	6 / 10	22,600	25,000	6 / 10	22,600
	4,980	4,404	0	6,841	25,000	6 / 10	22,540	25,000	6 / 10	22,540
	6,200	5,014	0	8,061	25,000	6 / 10	22,400	25,000	6 / 10	22,400
	9,250	6,539	0	11,111	23,720	6 / 6	21,000	20.520 #)	6 / 6	21.000 #)

### H25XD12 RATED CAPACITY KG @1200 LOAD CENTRE

	Lift height h <sub>3</sub> (mm)	Lowered height h <sub>1</sub> (mm)	Free lift height h <sub>2</sub> (m)	Extended height h <sub>4</sub> (mm)	Dual Function Side Shift & Fork Positioning carriage without ZERO IN-TO-IN forklifting		Dual Function Side Shift & Fork Positioning carriage with ZERO IN-TO-IN forklifting	
					Mast tilt (forward/ backward) (°)	Capacity @ 1.200 mm load centre (kg)	Mast tilt (forward/ backward) (°)	Capacity @ 1.200 mm load centre (kg)
2 STAGE NFL	3,155	3,491	0	5,016	6 / 10	22,700	6 / 10	22,700
	3,760	3,794	0	5,621	6 / 10	22,640	6 / 10	22,640
	4,370	4,099	0	6,231	6 / 10	22,600	6 / 10	22,600
	4,980	4,404	0	6,841	6 / 10	22,540	6 / 10	22,540
	6,200	5,014	0	8,061	6 / 10	22,400	6 / 10	22,400
	9,250	6,539	0	11,111	6 / 6	21,000	6 / 6	21.000 #)

### H28XD12 RATED CAPACITY KG @ 900 MM AND @1200 LOAD CENTRE

	Lift height h <sub>3</sub> (mm)	Lowered height h <sub>1</sub> (mm)	Free lift height h <sub>2</sub> (m)	Extended height h <sub>4</sub> (mm)	Dual Function Side Shift & Fork Positioning carriage without ZERO IN-TO-IN forklifting			Dual Function Side Shift & Fork Positioning carriage with ZERO IN-TO-IN forklifting		
					Capacity @ 900 mm load centre (kg)	Mast tilt (forward/ backward) (°)	Capacity @ 1.200 mm load centre (kg)	Capacity @ 900 mm load centre (kg)	Mast tilt (forward/ backward) (°)	Capacity @ 1.200 mm load centre (kg)
2 STAGE NFL	2,850	3,464	0	4,836	31,860	6 / 10	28,000	31,860	6 / 10	28,000
	3,155	3,616	0	5,141	31,860	6 / 10	28,000	31,860	6 / 10	28,000
	3,760	3,919	0	5,746	31,860	6 / 10	28,000	31,860	6 / 10	28,000
	4,370	4,224	0	6,356	31,860	6 / 10	28,000	31,860	6 / 10	28,000
	6,200	5,139	0	8,186	31,860	6 / 10	28,000	31,860	6 / 10	28,000
	6,810	5,444	0	8,716	31,700	6 / 10	27,860	31,700	6 / 10	27,860
	9,250	7,174	0	11,746	30,920	6 / 6	27,180	30.920 #)	6 / 6	27.180 #)
	9,860	7,479	0	12,356	30,600	6 / 6	26,900	29.660 #)	6 / 6	26.900 #)

# MAST AND CAPACITY INFORMATION

## H30XD9 RATED CAPACITY KG @ 900 MM AND @1200 LOAD CENTRE

	Lift height h <sub>3</sub> (mm)	Lowered height h <sub>1</sub> (mm)	Free lift height h <sub>2</sub> (m)	Extended height h <sub>4</sub> (mm)	Dual Function Side Shift & Fork Positioning carriage without ZERO IN-TO-IN forklifting			Dual Function Side Shift & Fork Positioning carriage with ZERO IN-TO-IN forklifting		
					Capacity @ 900 mm load centre (kg)	Mast tilt (forward/backward) (°)	Capacity @ 1,200 mm load centre (kg)	Capacity @ 900 mm load centre (kg)	Mast tilt (forward/backward) (°)	Capacity @ 1,200 mm load centre (kg)
2 STAGE NFL	2,850	3,464	0	4,836	30,000	6 / 10	27,000	30,000	6 / 10	27,000
	3,155	3,616	0	5,141	30,000	6 / 10	27,000	30,000	6 / 10	27,000
	3,760	3,919	0	5,746	30,000	6 / 10	26,940	30,000	6 / 10	26,940
	4,370	4,224	0	6,356	30,000	6 / 10	26,880	30,000	6 / 10	26,880
	6,200	5,139	0	8,186	30,000	6 / 10	26,620	30,000	6 / 10	26,620
	6,810	5,444	0	8,716	29,840	6 / 10	26,420	29,840 #)	6 / 10	26,420 #)
	9,250	7,174	0	11,746	28,880	6 / 6	25,360	28,880 #)	6 / 6	25,360 #)
	9,860	7,479	0	12,356	28,580	6 / 6	25,120	28,580 #)	6 / 6	25,120 #)

## H30XD12 RATED CAPACITY KG @ 900 MM AND @1200 LOAD CENTRE

	Lift height h <sub>3</sub> (mm)	Lowered height h <sub>1</sub> (mm)	Free lift height h <sub>2</sub> (m)	Extended height h <sub>4</sub> (mm)	Dual Function Side Shift & Fork Positioning carriage without ZERO IN-TO-IN forklifting			Dual Function Side Shift & Fork Positioning carriage with ZERO IN-TO-IN forklifting		
					Capacity @ 900 mm load centre (kg)	Mast tilt (forward/backward) (°)	Capacity @ 1,200 mm load centre (kg)	Capacity @ 900 mm load centre (kg)	Mast tilt (forward/backward) (°)	Capacity @ 1,200 mm load centre (kg)
2 STAGE NFL	2,850	3,464	0	4,836	32,000	6 / 10	30,000	32,000	6 / 10	30,000
	3,155	3,616	0	5,141	32,000	6 / 10	30,000	32,000	6 / 10	30,000
	3,760	3,919	0	5,746	32,000	6 / 10	30,000	32,000	6 / 10	30,000
	4,370	4,224	0	6,356	32,000	6 / 10	30,000	32,000	6 / 10	30,000
	6,200	5,139	0	8,186	32,000	6 / 10	30,000	32,000	6 / 10	30,000
	6,810	5,444	0	8,716	31,840	6 / 10	29,840	31,840	6 / 10	29,840
	9,250	7,174	0	11,746	31,100	6 / 6	29,000	31,100 #)	6 / 6	29,000 #)
	9,860	7,479	0	12,356	30,880	6 / 6	29,680	29,840 #)	6 / 6	28,720 #)

## H32XD9 RATED CAPACITY KG @ 900 MM AND @1200 LOAD CENTRE

	Lift height h <sub>3</sub> (mm)	Lowered height h <sub>1</sub> (mm)	Free lift height h <sub>2</sub> (m)	Extended height h <sub>4</sub> (mm)	Dual Function Side Shift & Fork Positioning carriage without ZERO IN-TO-IN forklifting			Dual Function Side Shift & Fork Positioning carriage with ZERO IN-TO-IN forklifting		
					Capacity @ 900 mm load centre (kg)	Mast tilt (forward/backward) (°)	Capacity @ 1,200 mm load centre (kg)	Capacity @ 900 mm load centre (kg)	Mast tilt (forward/backward) (°)	Capacity @ 1,200 mm load centre (kg)
2 STAGE NFL	2,850	3,464	0	4,836	32,000	6 / 10	28,680	32,000	6 / 10	28,680
	3,155	3,616	0	5,141	32,000	6 / 10	28,640	32,000	6 / 10	28,640
	3,760	3,919	0	5,746	32,000	6 / 10	28,560	32,000	6 / 10	28,560
	4,370	4,224	0	6,356	32,000	6 / 10	28,500	32,000	6 / 10	28,500
	6,200	5,139	0	8,186	32,000	6 / 10	28,240	32,000	6 / 10	28,240
	6,810	5,444	0	8,716	31,840	6 / 10	28,040	31,840	6 / 10	28,040
	9,250	7,174	0	11,746	30,020	6 / 6	26,360	30,020 #)	6 / 6	26,360 #)
	9,860	7,479	0	12,356	29,420	6 / 6	26,160	29,420 #)	6 / 6	26,120 #)

## H32XD12 RATED CAPACITY KG @1200 LOAD CENTRE

	Lift height h <sub>3</sub> (mm)	Lowered height h <sub>1</sub> (mm)	Free lift height h <sub>2</sub> (m)	Extended height h <sub>4</sub> (mm)	Dual Function Side Shift & Fork Positioning carriage without ZERO IN-TO-IN forklifting		Dual Function Side Shift & Fork Positioning carriage with ZERO IN-TO-IN forklifting	
					Mast tilt (forward/backward) (°)	Capacity @ 1,200 mm load centre (kg)	Mast tilt (forward/backward) (°)	Capacity @ 1,200 mm load centre (kg)
2 STAGE NFL	2,850	3,464	0	4,836	6 / 10	32,000	6 / 10	32,000
	3,155	3,616	0	5,141	6 / 10	32,000	6 / 10	32,000
	3,760	3,919	0	5,746	6 / 10	32,000	6 / 10	32,000
	4,370	4,224	0	6,356	6 / 10	32,000	6 / 10	32,000
	6,200	5,139	0	8,186	6 / 10	32,000	6 / 10	32,000
	6,810	5,444	0	8,716	6 / 10	32,000	6 / 10	32,000
	9,250	7,174	0	11,746	6 / 6	31,020	6 / 6	31,020
	9,860	7,479	0	12,356	6 / 6	30,720	6 / 6	29,820

## ➤ FEATURES AND OPTIONS

PERFORMANCE	STD	OPT
Mercedes 6R1000 7.7L Stage V Diesel Engine rated 180 kW @ 2200 rpm	X	
Stage V compliant	X	
Hydraulically driven on-demand cooling fan	X	
150 amp alternator	X	
Performance modes selectable in Integrated Performance Display	X	
Powertrain protection system	X	
Heavy duty air intake	X	
High mount exhaust	X	
ZF Transmission 5WG211 5-speeds fwd/3-speeds reverse auto-shifting	X	
AxleTech PRLC1794 drive axle with wet disc brakes (H25XD/S)	X	
AxleTech PRC3806 drive axle with wet disc brakes (H28-32XD/S)	X	
Kessler D81 drive axle with wet disc brakes		
DRIVE	STD	OPT
Travel speed limiter - unconditional (adjustable)	X	
Speed limiter - unconditional and customer adjustable		X
Travel speed limiter - loaded (adjustable)		X
14.00 - 24 28PR Pneumatic Bias Ply drive and steer tires (H25XD/S)	X	
14.00 - R24 Michelin XZM Radial drive and steer tires (H25XD/S)		X
14.00 - R24 Trelleborg Radial drive and steer tires (H25XD/S)		X
16.00 - 25 32PR Pneumatic Bias Ply drive and steer tires (H28-32XD/S)	X	
16.00 - 25 32PR Continental Straddlemaster Bias Ply drive and steer tires (H28-32XD/S)		X
16.00 - R25 Michelin XZM Radial drive and steer tires (H28-32XD/S)		X
14.00 - R24 Trelleborg Radial drive and steer tires (H28-32XD/S)		X
Spare wheels and tires		X
LIFT	STD	OPT
180cc Dual (90+90) Pump Hydraulic System	X	
On-Demand Load Sensing Hydraulic System	X	
Automatic Throttle-up when lifting (in neutral or inching)	X	
2 Stage Non Free Lift mast	X	
2 Stage Full Free Lift mast		X
3 Stage Full Free Lift mast		X
Mast tilt - 6° Forward / 6° Back		X
Mast tilt - 6° Forward / 10° Back	X	
Mast tilt - 15° Forward / 10° Back		X
Hydraulic Accumulator		X
Pressure Compensated Lowering		X
Hydraulic system temperature protection	X	
Hydraulic system temperature protection with performance de-rate		X
HANDLING	STD	OPT
Short Wheelbase		X
96" (2440mm) length pin type forks	x	
96" (2440mm) length hook type forks		x
96" (2440mm) length integral forks		x
122" (3100mm) Pin type carriage with mechanical fork locks	X	
122" (3100mm) Pin type carriage with individual fork positioner		X
122" (3100mm) Pin type apron style carriage		X

HANDLING <i>(continued)</i>	STD	OPT
122" (3100mm) Pin type apron style carriage with individual fork positioner		X
118" (3000mm) Hook type dual function sideshift carriage with simultaneous and individual fork positioner	X	
118" (3000mm) Hook type dual function sideshift carriage with simultaneous and individual fork positioner - 11.8" (300mm) in-to-in		X
118" (3000mm) Hook type dual function sideshift carriage with individual fork positioner and 1 auxiliary function		X
118" (3000mm) Hook type dual function sideshift carriage with individual fork positioner and 1 auxiliary function - 11.8" (300mm) in-to-in		X
129" (3280mm) Pin type carriage with mechanical fork locks		X
129" (3280mm) Pin type carriage with individual fork positioner		X
129" (3280mm) Pin type apron style carriage		X
129" (3280mm) Pin type apron style carriage with individual fork positioner		X
125" (3180mm) Hook type dual function sideshift carriage with simultaneous and individual fork positioner	X	
125" (3180mm) Hook type dual function sideshift carriage with simultaneous and individual fork positioner - 13" (330mm) in-to-in		X
125" (3180mm) Hook type dual function sideshift carriage with individual fork positioner and 1 auxiliary function		X
125" (3180mm) Hook type dual function sideshift carriage with individual fork positioner and 1 auxiliary function - 13" (330mm) in-to-in		X
2440mm x 105mm x 280mm Pin type forks		X
2440mm x 105mm x 280mm Hook type forks	X	
2440mm x 110mm x 300mm Pin type forks		X
2440mm x 105mm x 300mm Pin type forks		X
2440mm x 110mm x 300mm Hook type forks	X	
2440mm x 105mm x 300mm Hook type forks		X
Integrated Coil Ram		X
ERGONOMICS	STD	OPT
Open module operator compartment (without doors & screens)		X
Enclosed operator cabin	X	
Powered tilt operator compartment for service		X
Manual tilt operator compartment for service	X	
Operator presence system	X	
Mechanical suspension seat	X	
Air suspension seat		X
Deluxe air suspension seat		X
Low backrest seat	X	
High backrest seat		X
Cloth seat cover	X	
Vinyl seat cover		X
Seat heating		X
Seat ventilation		X
2-point high visibility seatbelt	X	
3-point high visibility seatbelt		X
Lateral seat sliding mechanism		X
Floor mat	X	
Coat hook	X	
Dimmable dome interior light		X
Front, top and rear wipers	X	
"H"-pattern front wiper		X
"I"-pattern front wiper	X	
Front and rear window defrosters	X	

## FEATURES AND OPTIONS <

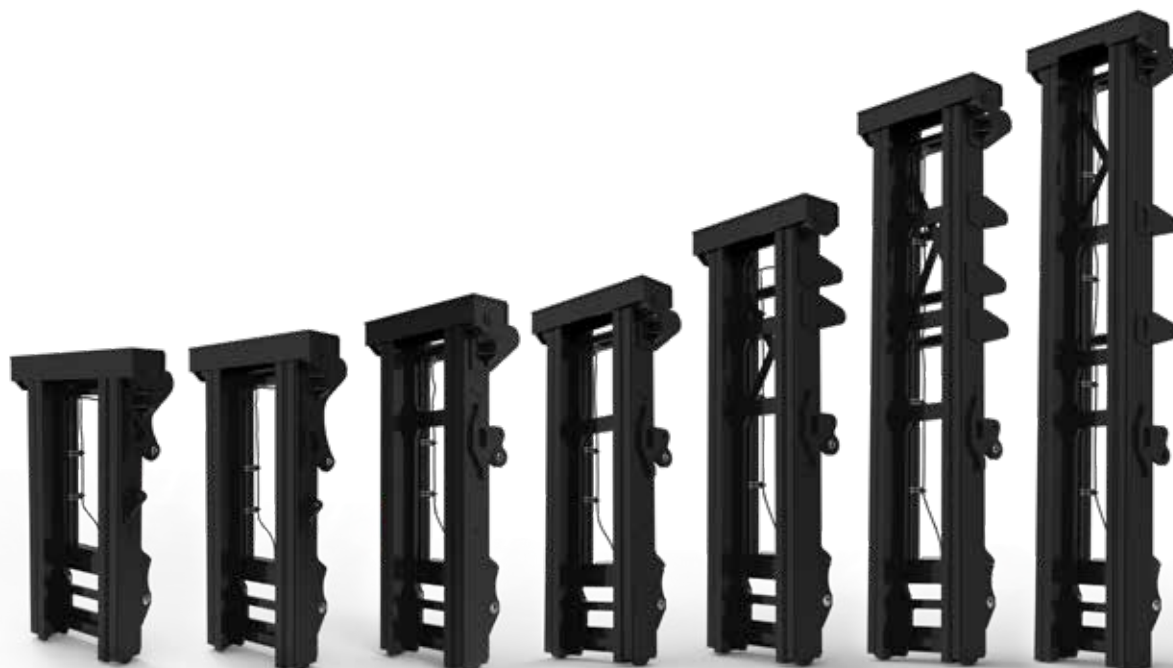
ERGONOMICS <i>(continued)</i>	STD	OPT
Right side door	X	
Rain top		X
Wire mesh installed on top of operator compartment		X
Vertical steel bar front window guard		X
Operator shield wire mesh		X
7" Integrated Performance Display	X	
Touchpoint™ mini levers hydraulic control integrated in Control Arm	X	
Joystick hydraulic control integrated in Control Arm		X
Steering wheel with spinner knob	X	
Directional control lever		X
Hyster Monotrol pedal directional control		X
Directional Control On Mini-levers or Joystick	X	
Directional Control on Joystick		X
Park brake - manual	X	
Park brake - automatic		X
Interior wide angle mirrors	X	
Heater with adjustable speed fan	X	
Telescoping & tilting steering column	X	
USB outlet inside armrest	X	
24-12 DC converter with 2 sockets and 2 USB outlets		X
Automatic climate control		X
Reading light		X
Sun shades on top and rear	X	
Sun visors front window	X	
Trainer seat		X
Recirculation fan		X
Additional recirculation fan		X
Accessory Mounting Bar on Cab Front Right Pillar		X
Document holder on Cab Front Right Pillar		X
Heated top- and/or rear window		X
Radio preparation set-up (wiring, two speakers and antenna)		X
Bluetooth Radio With 2 Speakers And Antenna		X
VISIBILITY	STD	OPT
Top Window with Armoured Glass (FOPS Certified)	X	
Top Window with Armoured Glass (FOPS Certified) and Additional Steel Bars		X
Exterior mirrors mounted to cab		X
Rear view camera system		X
Radar object detection system		X
Halogen work lights	X	
LED work lights		X
High Performance LED work lights		X
Two Halogen head lights mounted on front fenders	X	
Two LED head lights mounted on front fenders		X
Two mast mounted work lights	X	
Four cabin mounted work lights		X
Two rearward work lights mounted on the cabin	X	
LED stop/tail/brake lights	X	
Turn signals, hazard & marker lights (LED)	X	
OPERATION	STD	OPT
Air horn 112 dBA		X
Electric horn 105 dBA	X	
Audible alarm – Reverse direction activated 82–102 dB(A), self-adjusting	X	

OPERATION <i>(continued)</i>	STD	OPT
Blue LED spotlight – rear / front and rear		X
Hydraulic load weighing system		X
Automatic truck shutdown with timer		X
Automatic Climate Control off with open door		X
Delayed engine shutdown for turbo cooldown	X	
Lockable battery disconnect switch	X	
Battery jump start connector (NATO plug)		X
Truck Start with key switch and start button	X	
Operator password (display) for Truck Start		X
Seatbelt Interlock for truck start		X
Power distribution group with fuses	X	
Fuses Partially Replaced by Electric Circuit Breakers		X
Non-lockable fuel cap	X	
Lockable fuel cap		X
Fuel strainer in fuel tank		X
Hyster Tracker wireless asset management - Access / Verification		X
Hyster Tracker wireless asset management - Monitoring	X	
Auto greasing system for base truck	X	
24 volt electrical system	X	
Steer wheel lug nut protection		X
Engine compartment light		X
Front mud flaps		X
Rear mud flaps		X
4 Lifting eyes - 2 front and 2 rear		X
APPEARANCE	STD	OPT
Second capacity plate		X
Hyster yellow paint base truck	X	
Special paint base truck		X
Operator compartment special paint (outside only)		X
Hazard warning striping on counterweight		X
SUPPLEMENTAL	STD	OPT
Literature package	X	
Operator's manual	X	
CE certification	X	
Warranty: 24 Months / 4,000 Hours Parts manufacturer's warranty	X	
Warranty: 12 Months / 2,000 Hours Parts manufacturer's warranty		X

*\*Standard or optional in selected markets or models. Other options available through Special Products Engineering Department (SPED). Contact Hyster for details.*

## > FRONT END EQUIPMENT

### RANGE OF 2 STAGE NFL MASTS



### PIN TYPE AND QUICK DISCONNECT HOOK TYPE FORKS



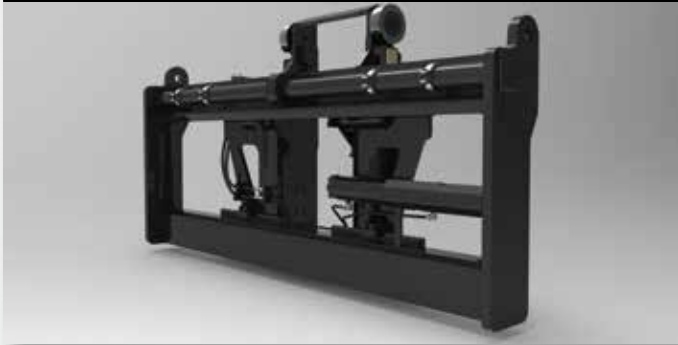
### 3.100 MM WIDE STANDARD CARRIAGE – PIN TYPE FORKS



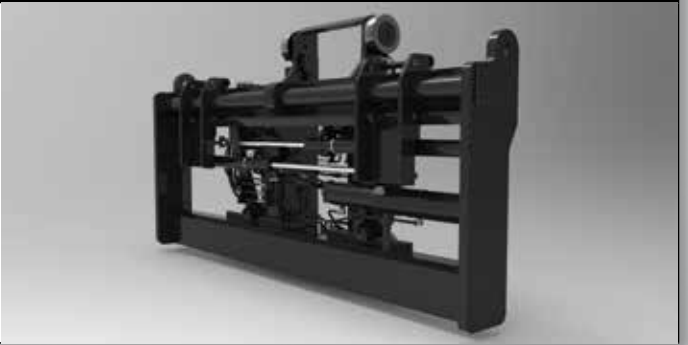
### 3.100 MM WIDE CARRIAGE WITH FORK POSITIONING – INDIVIDUAL FORK CONTROL – PIN TYPE FORKS



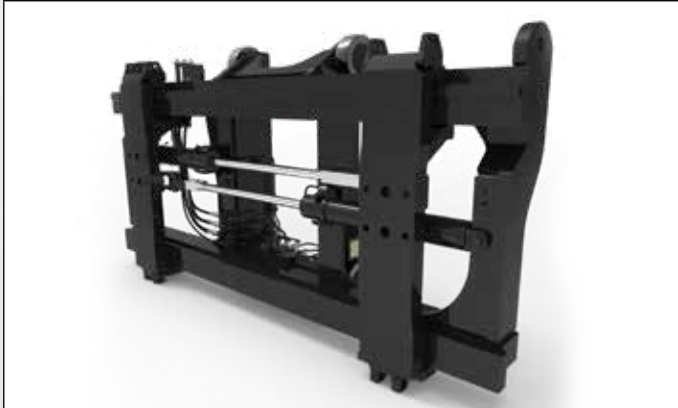
**3.100 MM WIDE SIDE SHIFT FRAME CARRIAGE — PIN TYPE FORKS**



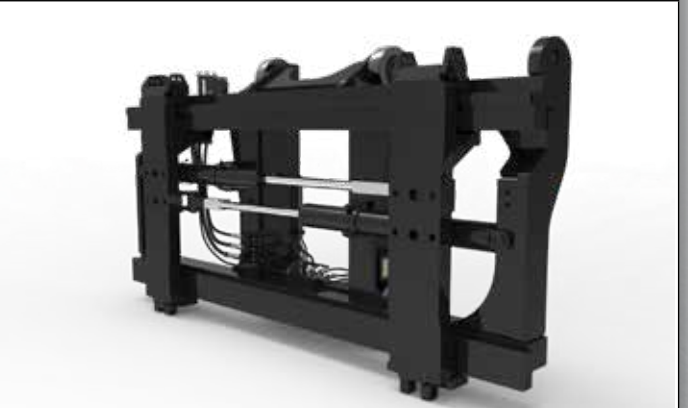
**3.100 MM WIDE SIDE SHIFT FRAME CARRIAGE WITH FORK POSITIONING — INDIVIDUAL FORK CONTROL — PIN TYPE FORKS**



**3.040 MM WIDE HOOK TYPE MOUNT DUAL FUNCTION CARRIAGE WITH SIDE SHIFT AND FORK POSITIONING — INDIVIDUAL FORK CONTROL — HOOK TYPE FORKS**



**3.200 MM WIDE MULTI PURPOSE DUAL FUNCTION CARRIAGE WITH SIDE SHIFT AND FORK POSITIONING — INDIVIDUAL FORK CONTROL — HOOK TYPE FORKS**



**MONO MAST**



**INTEGRATED COIL RAM CARRIAGE**



**SIDE SHIFT FRAME PIN TYPE MOUNT INTEGRATED COIL RAM CARRIAGE**



**COIL RAM**



# STRONG PARTNERS. TOUGH TRUCKS.™

## FOR DEMANDING OPERATIONS, EVERYWHERE.

Hyster supplies a complete range of warehouse equipment, IC and electric counterbalanced trucks, container handlers and reach stackers. Hyster is committed to being much more than a lift truck supplier.

Our aim is to offer a complete partnership capable of responding to the full spectrum of material handling issues: Whether you need professional consultancy on your fleet management, fully qualified service support, or reliable parts supply, you can depend on Hyster.

Our network of highly trained dealers provides expert, responsive local support. They can offer cost-effective finance packages and introduce effectively managed maintenance programmes to ensure that you get the best possible value. Our business is dealing with your material handling needs so you can focus on the success of your business today and in the future.



### HYSTER EUROPE

Centennial House, Frimley Business Park, Frimley, Surrey, GU16 7SG, England.

Tel: +44 (0) 1276 538500



[www.hyster.eu](http://www.hyster.eu)



[infoeurope@hyster.com](mailto:infoeurope@hyster.com)



[/HysterEurope](https://www.facebook.com/HysterEurope)



[@HysterEurope](https://twitter.com/HysterEurope)


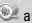


[/HysterEurope](https://www.youtube.com/HysterEurope)



HYSTER-YALE UK LIMITED trading as Hyster Europe. Registered Address: Centennial House, Building 4.5, Frimley Business Park, Frimley, Surrey GU16 7SG, United Kingdom.

Registered in England and Wales. Company Registration Number: 02636775.

©2020HYSTER-YALE UK LIMITED, all rights reserved. HYSTER, , STRONG PARTNERS. TOUGH TRUCKS., MONOTROL and  are trademarks of HYSTER-YALE Group, Inc. Cummins is a trademark of Cummins Inc. ZF is a trademark of ZF Friedrichshafen AG. Kessler is a trademark of Kessler & Co. GmbH & Co. KG. Michelin is a trademark of Cie Gnl des Etblsmnts Michelin SCA. Trelleborg is trademark of Trelleborg AB. Hyster products are subject to change without notice. Forklift trucks illustrated may feature optional equipment.